

1

2

3

4

5

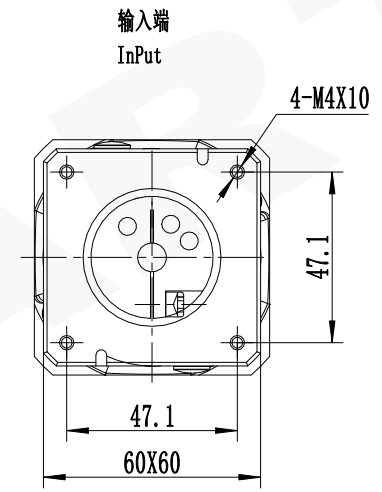
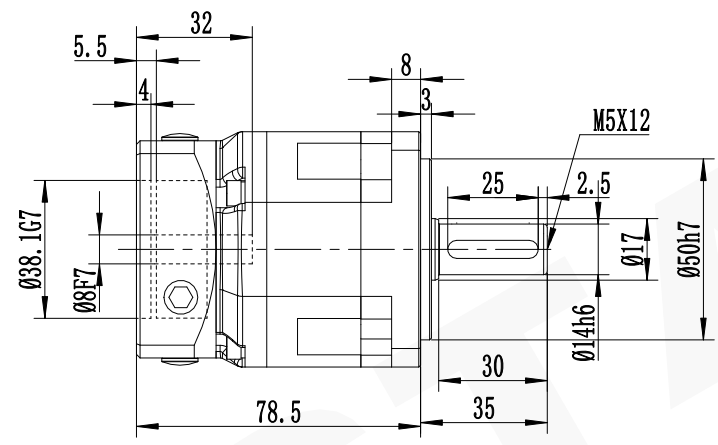
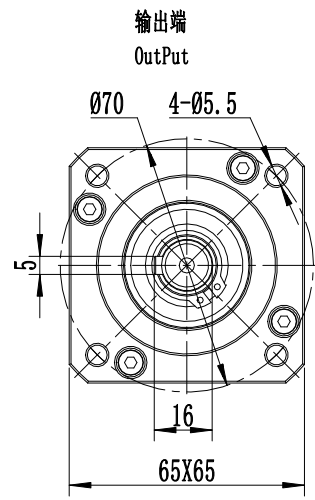
6

A

B

C

D




A

B

C

D

减速比 (Ratio i)		3	4	5	6	8	10		3-6	±0.3
额定承载扭矩(Rated load torque)		Nm	22	45	41	26	18	15	6-30	±0.5
最大加速力矩 (Max.acceleration torque)		Nm	39.6	81	73.8	46.8	32.4	27	30-120	±0.8
急停扭矩 (Emergency stop toque)		Nm	66	135	123	78	54	45	120-400	±1.2
									400-1000	±2
精密行星减速机技术参数									精密行星减速机	
									Precision Planetary Gear Boxes	
容许最大径向载荷 (Max.radial load)	480N	空载力矩20℃(No-load torque)				≤ 0.1Nm				PS070L1-i-P2-S2 8-24-38.1-147.14-M4
容许最大轴向载荷 (Max.axial load)	600N	润滑(Lubrication)				合成润滑油脂 (Synthetic grease)				
额定输入转速 (Nominal input speed)	3000r/min	使用环境温度(Operation temperature)				-15℃~+90℃				
最大输入转速 (Max input speed)	6000r/min	使用寿命(Service life)				≥20000h				
噪音 (Noise)	≤ 60db	防护等级(Protection grade)				IP54			A. PS. 070.	
回程间隙 (Backlash)	8arcmin			PS系列		Tel/电话: 0533-6288333 6288444				
				P2 L1		Fax/传真: 0533-6288411				
						Web/网址: www.newstart.cn				