

1

2

3

4

5

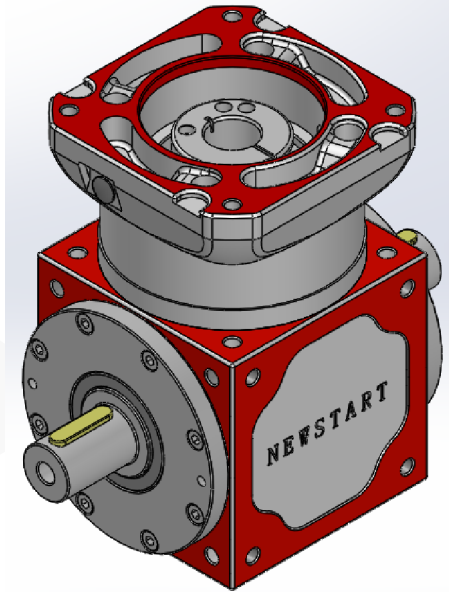
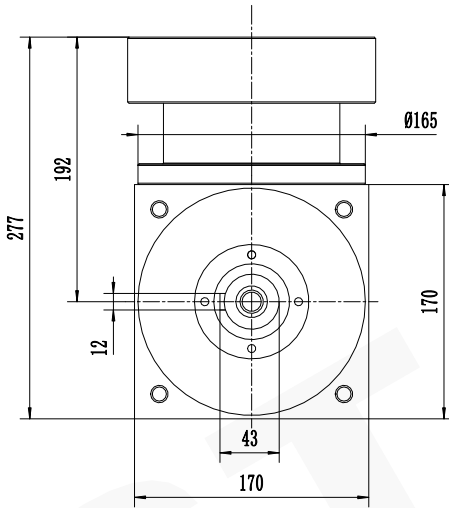
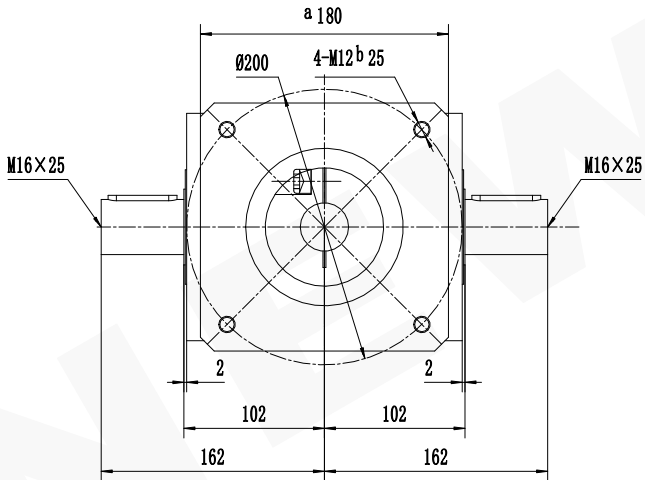
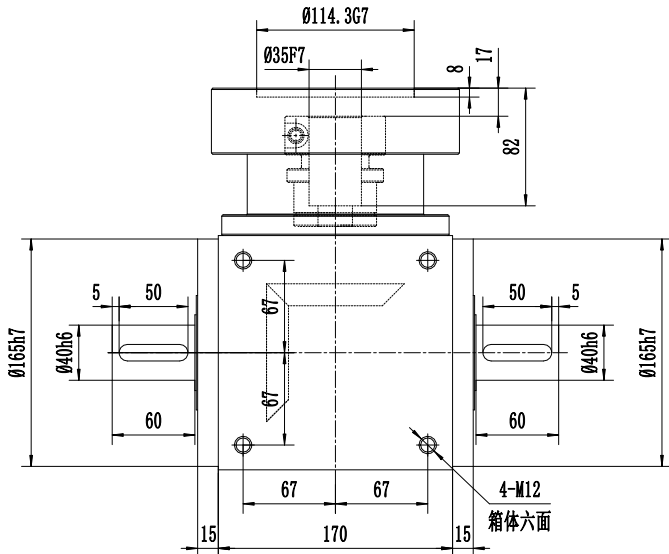
6

A

B

C

D



A

B

C

D

减速比 (Ratio i)		1	2						
额定承载扭矩 (Rated load torque)	Nm	585	544						
最大加速力矩 (Max. acceleration torque)	Nm	878	816						
急停扭矩 (Emergency stop torque)	Nm	1755	1632						

精密行星减速机技术参数				
容许最大径向载荷 (Max. radial load)	3800N	空载力矩20℃ (No-load torque)		≤ 0.72Nm
容许最大轴向载荷 (Max. axial load)	1900N	润滑 (Lubrication)		合成润滑脂 (Synthetic grease)
额定输入转速 (Nominal input speed)	1500r/min	使用环境温度 (Operation temperature)		-15℃~+90℃
最大输入转速 (Max input speed)	3000r/min	使用寿命 (Service life)		≥20000h
噪音 (Noise)	≤ 72db	防护等级 (Protection grade)		IP54
回程间隙 (Backlash)	6arcmin	PW系列		Tel/电话: 0533-6288333 6288444
		P2 L1		Fax/传真: 0533-6288411
				Web/网址: www.newstart.cn

未注线性尺寸极限偏差
Unmarked tolerance

0.5-3	± 0.2
3-6	± 0.3
6-30	± 0.5
30-120	± 0.8
120-400	± 1.2
400-1000	± 2

1

2

3

4

5

6