

1

2

3

4

5

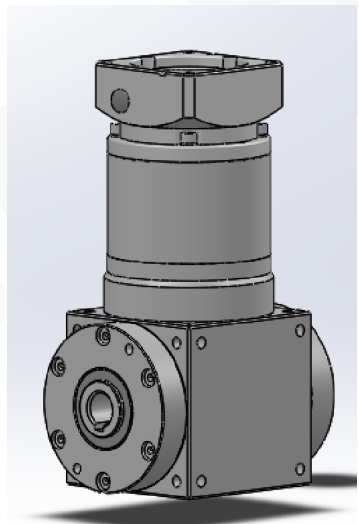
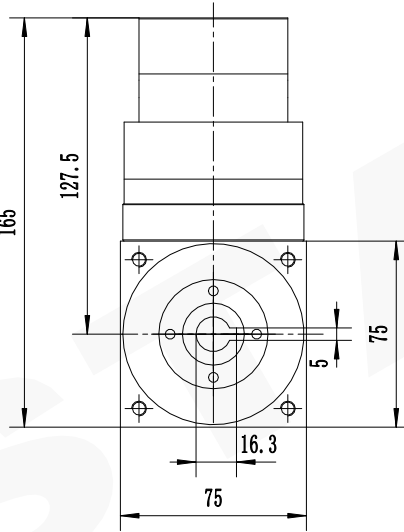
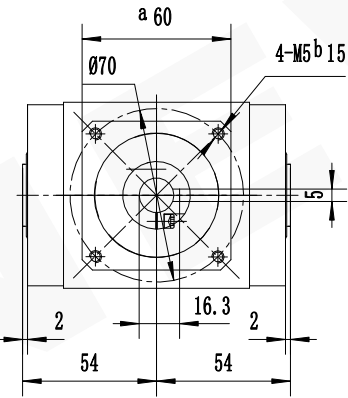
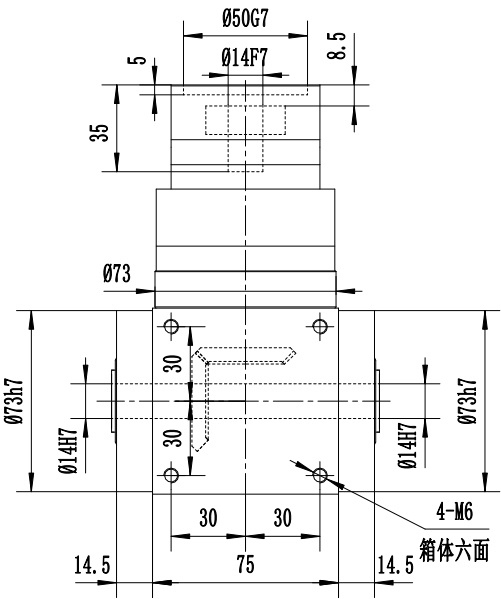
6

A

B

C

D



A

B

C

D

减速比 (Ratio i)		3	4	5	6	8	10	
额定承载扭矩 (Rated load torque)		Nm	45	45	45	45	45	42
最大加速力矩 (Max. acceleration torque)		Nm	68	68	68	68	68	63
急停扭矩 (Emergency stop torque)		Nm	135	135	135	135	135	126
精密行星减速机技术参数								
容许最大径向载荷 (Max. radial load)	950N	空载力矩20℃ (No-load torque)				≤ 0.1Nm		
容许最大轴向载荷 (Max. axial load)	425N	润滑 (Lubrication)				合成润滑脂 (Synthetic grease)		
额定输入转速 (Nominal input speed)	3000r/min	使用环境温度 (Operation temperature)				-15℃~+90℃		
最大输入转速 (Max input speed)	6000r/min	使用寿命 (Service life)				≥20000h		
噪音 (Noise)	≤ 63db	防护等级 (Protection grade)				IP54		
回程间隙 (Backlash)	8arcmin				PW系列		Tel/电话: 0533-6288333 6288444	
					P2 L1		Fax/传真: 0533-6288411	
							Web/网址: www.newstart.cn	

未注线性尺寸极限偏差 Unmarked tolerance	
0.5-3	± 0.2
3-6	± 0.3
6-30	± 0.5
30-120	± 0.8
120-400	± 1.2
400-1000	± 2
精密行星减速机 Precision Planetary Gear Boxes	
 紐氏達特	
PW75L1-i-K2-14-30- 50-70-M5	
A. PW.	075.

1

2

3

4

5

6